

RYKOV Libčany, s.r.o.
Libčany 14
50322 Libčany
Czech Republic
T/F +420 495 585 422
rykov@rykov.cz
www.rykov.cz



USER GUIDE – INSTALLATION AND OPERATION INSTRUCTIONS

LAWN TRACTOR SNOWPLOW 100 - 150 (LAWN TRACTOR MODEL)



Contents

1 Introduction.....	3
1.1 Basic warnings.....	3
2 Safety of operation	4
2.1 Safety regulations.....	4
2.2 Safety pictograms.....	4
3 Basic information.....	5
3.1 Snowplow use.....	5
3.1.1 Technical data.....	5
3.2 Snowplow and parts description.....	5
4 Instruction of use.....	6
4.1 Snowplow assembly.....	6
4.2 Total lawn tractor payload	7
4.3 Connecting the snowplow to the lawn tractor.....	7
4.4 Putting the snowplow into operation.....	7
4.4.1 Use in slope/hill.....	8
4.5 Work with snowplow.....	8
4.5.1 Height adjustment.....	8
4.5.2 Angle adjustment.....	8
4.5.3 Work height adjustment.....	9
4.5.4 Snow plowing method.....	9
4.5.4.1 Snow plowing problems.....	9
5 Maintenance, care, storage.....	10
5.1 Snowplow lubrication.....	10
5.1.1 Lubrication points.....	10
5.2 Rubber blade change.....	11
5.3 Service intervals.....	11
5.4 Troubleshooting and solutions.....	11
5.5 Storage.....	12
5.5.1 Washing and cleaning.....	12
5.6 Packing material and snow blade disposal after end of lifetime.....	12
5.7 Production tag.....	12
6 List of spare parts.....	13

1 Introduction

Dear valued customer and user!

Thank you for your trust and purchase of our product.

The snowplow 100 - 150 is designated for use with lawn tractor. Primary use is plowing of snow and impurities from roads, sidewalks, and other applicable areas.

Please carefully read user installation and operation information.

1.1 Basic information

We strongly recommend reading and follow installation and operation instructions for safety of user, other persons, and property.

The safety instructions given in this manual do not describe all possibilities, conditions and situations that may occur in practice. Safety factors such as common sense, caution and diligence are not part of this manual, but are assumed to be used by every person who handles or performs work with this snowplow.

Only mentally and physically healthy persons may work with this snowplow. In the case of professional use of this machine, the owner of the snowplow is obliged to ensure that the operators who will use the machine receive training on work safety and conduct an instruction on how to operate this snowplow and keep records of these trainings. They must also carry out the so-called categorization of works according to the relevant national legislation.



If you do not understand some of the information in the manual, contact your supplier or the snowplow manufacturer directly.

The instructions for use are an integral part of the snowplow. They must be always available, stored in an accessible place where there is no risk of their destruction. When selling the snowplow to another person, the user manuals must be handed over to the new owner.

The manufacturer is not responsible for risks, dangers, accidents, and injuries arising from the operation of the snowplow, if the above conditions are not met. The manufacturer is not responsible for damage caused by unauthorized use, improper operation of the snowplow and for damage caused by any modification of the snowplow without the manufacturer's consent.

When working, it is especially necessary to follow the safety regulations to avoid the risk of injury to yourself, other people or causing damage to property.

Any unauthorized modification of the snowplow will void the warranty.

	If you see this symbol in the manual, read the following information carefully!
	This international safety symbol indicates important safety-related information. When you see this symbol, be alert to the possibility of injury to yourself or others and read the following information carefully.

Tab. 1: Symbols








The manufacturer reserves the right to technical changes and innovations that do not affect the function and safety of the snowplow.

These changes may not be reflected in this user guide. Typographical errors reserved.

2 Safety of use

The machine is designed to protect the operator from flying parts as much as possible. Do not remove any passive or active safety feature. This puts you at risk of injury.

2.1 Safety regulations

-  The operator of the snowplow must be over 18 years old. It is necessary to understand the instructions for using the machine and to be aware of the general principles of occupational safety.
-  Every time you use the snowplow, check that any part is not damaged or loose. Detected defects must be removed immediately. A damaged snowplow must not be put into operation. Use only original spare parts for repairs.
-  Before using the snowplow, the working area must be free of large solid objects (such as stones, wires, loose construction debris, etc.) that could be hit or could damage the machine. If they cannot be removed, avoid these places.
-  When working with the snowplow, all other people (especially children) and animals must be outside the working area of the machine. The operator can continue working only after they have been sent to a safe distance.
-  It is forbidden to remove all protective devices and covers from the snowplow.
-  All repairs, adjustments, lubrication, and cleaning of the snowplow must be performed when the machine is stationary and in its secured position.
-  Connect and disconnect the snowplow from the tractor on a flat, dry and firm surface.

2.2 Safety pictograms

Respect the pictograms located on the machine and their meaning!



PIC. 1: Read the user manual before using the machine.



PIC. 2: Danger of being hit by flying fragments, cuttings, thrown objects, etc. Other people and animals - keep a safe distance from the machine.



PIC. 3: Maximum speed allowed when plowing.

3 Basic Information

3.1 Snowplow use

The snowplow SB 100 – 150 is designed and manufactured according to the latest knowledge in the field of small garden and agricultural equipment. It stands out for its easy handling and trouble-free maintenance.

The snowplow is mainly intended for plowing snow, but also other loose materials, e.g.: garden soil, sand, gravel, etc. The height and angle of the snowplow can be adjusted (5 positions) using a main lever.

⚠ Use snowblade only for specified purpose. Use for any other unspecified purpose is prohibited!

⚠ It is forbidden to remove all protective devices and covers from the snowblade.

3.1.1 Technical data

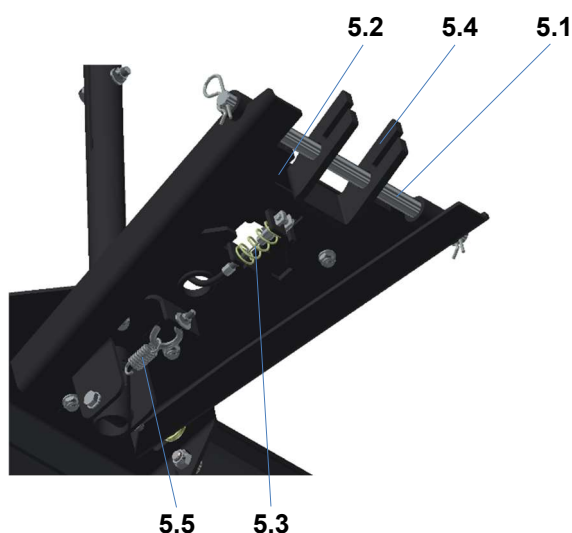
TYPE	SB 100	SB 120	SB 130	SB 140	SB 150	Unit
Length (incl. main lever)	1015					mm
Width	100	1200	1300	1400	1500	mm
Height (incl. main lever)	1457					mm
Snowplow working width	100	1200	1300	1400	1500	mm
Weight	28,5	30,9	32,1	33,3	34,5	kg

Tab. 2: Snow blade technical data

3.2 Snowplow and parts description



PIC. 4: Snowplow description view A

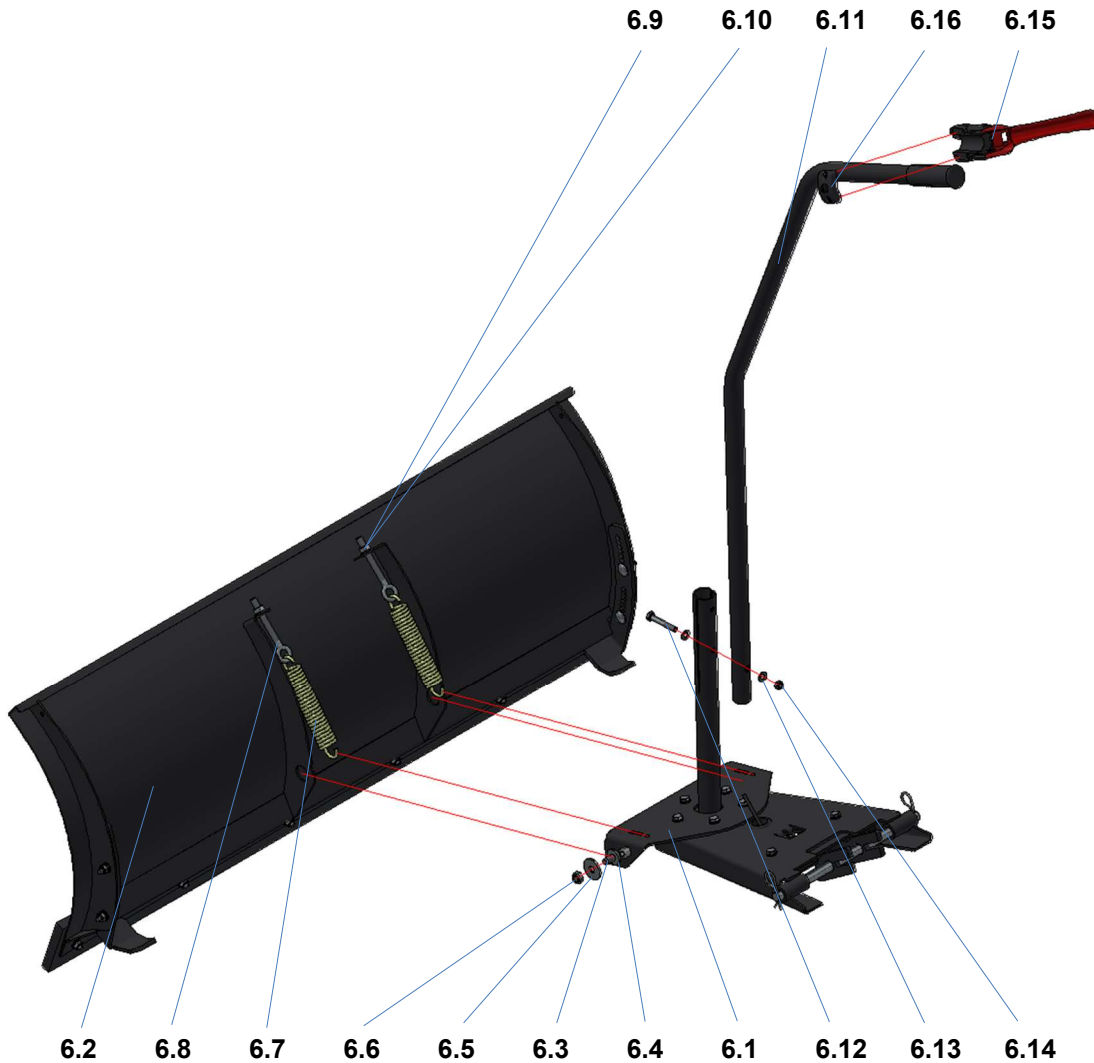


PIC. 5: Machine description view B

The main part of the snowplow is the front blade (4.1). Blade is connected via an angle adjustment bracket (4.2) to main frame (4.3). Springs (4.4) return the front blade to the working position in the event of an impact with a fixed obstacle. A rubber wear strip is mounted to the front part (4.5). Steel bar reinforcement (4.6). Adjustment of the working height is possible using the skid shoes (4.7). Main control lever (4.8) for lifting and angle setting. The snowblade is connected to the lawn tractor by pin (5.1). A sliding plate is designed to secure the blade in the upper position (5.2), it is compressed by spring (5.3) and support console (5.4) and secured by pin. The sliding plate is released using cable lever (4.9). A second spring pulls the control lever into the secured working position (5.5).

4 Instruction of use

4.1 Snowplow assembly



PIC. 6: Snowplow assembly

Assembly procedure:


1. Unpack the components from the box.
2. Put angle adjustment frame (6.1) between blade front reinforcements (6.2). Put COACH BOLT-M10x30 into the square hole in the turning frame (6.3). Use OVERSIZED WASHER 10,5 (6.4) for definition, attach OVERSIZED WASHER 11 (6.5) and tighten LOCKNUT M10 (6.6). Thread into the bottom oval hole EXTENSION SPRING 5x30x120x23 (6.7). Second end of EXTENSION SPRING attach to FORGET EYEBOLT M10x73 (6.8). FORGET EYEBOLT put into top reinforcement hole. Put on the WASHER 10.5 (6.9) and tighten the M10 NUT (6.10) so that the threaded part of the forged eye is approx. 15 mm from the upper return bend. Repeat the entire procedure on the other side.
3. Slide in tube control lever (6.11) in axis with the screw (6.12). Chose hole by tractor hood height – as connection point of tubes. Tighten using SCREW M8x50 (6.12), 2x WASHER 8,4 (6.13) and LOCKNUT M8 (6.14).
4. Install the red control lever (6.15) to the main control lever using the mounting plate and screws (6.16). Before tightening, move to the side.ya

4.2 Total lawn tractor payload

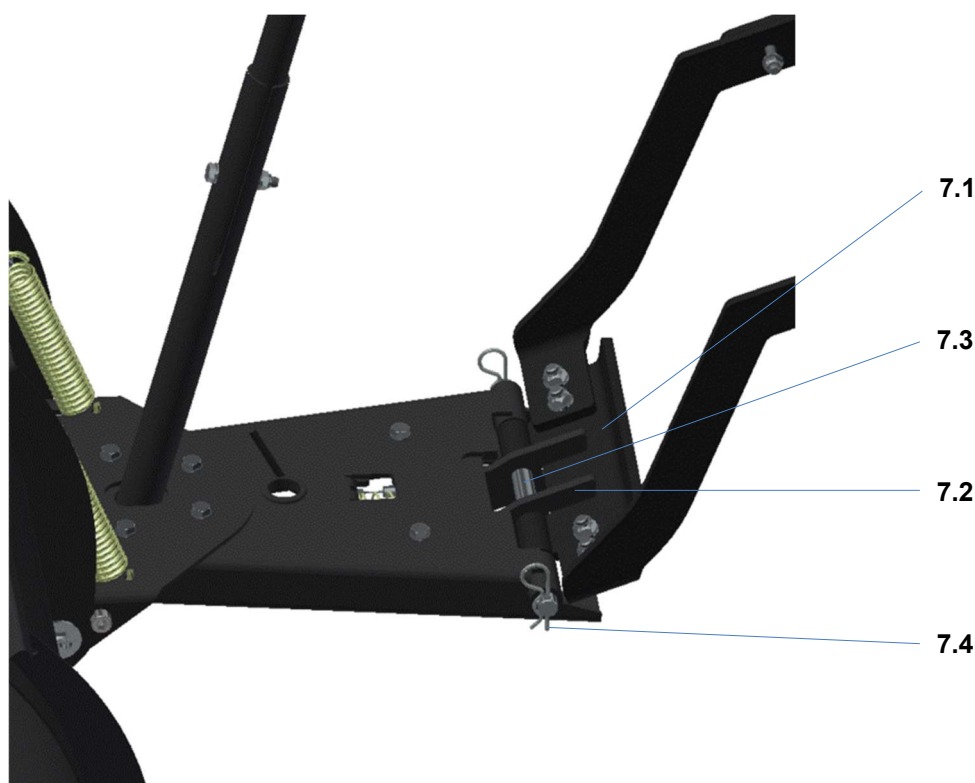
 **The tractor payload cannot be exceeded after snowplow connection.**

Considering the operating weight of the lawn tractor + the weight of the blade + the weight of the operator is strongly advised.

The operating and total weight information is listed in tractor manual by tractor manufacturer.

 **The stability of the garden tractor changes when the snowblade is attached.**

4.3 Attaching the snowplow to the lawn tractor



PIC. 7: Snowplow connection to the tractor adapter.

Insert the beam of the connecting frame (7.2) into the supporting part of the adapter (7.1). Connect the snowplow to the adapter through the tube housings with connecting pin (7.3) and secure with split pin (7.4) on both sides.

4.4 Putting the snowplow into operation

1. Attach snowplow to the lawn tractor.
2. Using the control lever lift and secure snowplow in lifted position.

 **Check that all persons, animals, children are at a safe distance from the device! If not, do not proceed with this activity.**

4.4.1 Use in slope/hill



Do not perform the work with snowplow in steeper slopes and terrain.



The safe slope accessibility of the tractor is 12°. Cleaning steeper slopes is at your responsibility.

4.5 Work with snowplow

4.5.1 Height adjustment



a) Setting up

Pull the control lever (8.1) towards you. Once released, the snowplow will be locked in the upper position by the locking mechanism.

b) Setting down

Pull the control lever (8.1) towards to you. Squeeze the red lever (8.2) and set the snowplow down to the ground.

PIC. 8: Height setting

4.5.2 Angle adjustment

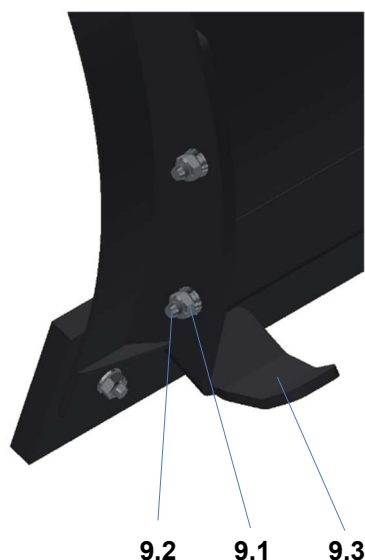
Lift the snowplow. Push the main control lever (8.1) forward:

- Turning snowplow to the right – main control lever push to the left.
- Turning snowplow to the left – main control lever push to the right.

Snowplow have two left possitions, center possition and two right possitions.

4.5.3 Work height adjustment – skid shoes setting

 Lower the snowplow to the flat surface during work and skid shoes height adjustment.




PIC. 9: Skid shoe setting

Procedure:


1. Use wrench size 13 mm, loosen the nuts (9.1) and remove screws (9.2)
2. Set skid shoes (9.3) – must sit on the ground.
3. Insert screw back and tighten the nuts.
4. Do the check – both skid shoes must be set to same level.

4.5.4 Snow plowing method

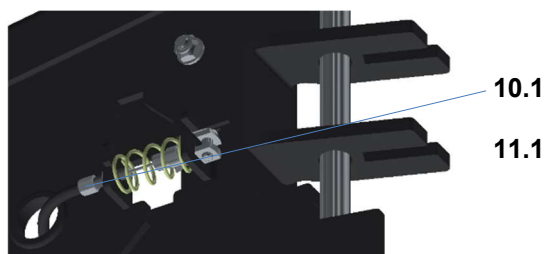
 Before using the snowplow, the terrain must be free of solid objects that could damage the snowplow. If they cannot be removed, avoid these places.

Lower the snowplow to the terrain and then drive towards the snow or other bulk material you want to clear. Snow/material is collected in the direction of travel forward or to the sides depending on the of the snowplow angle setting.

4.5.4.1 Snow plowing problems

 Be careful when cleaning the area around the rubber wear strip. It can be sharp. Protect your hands with work gloves when cleaning.

 Do the check with the snowplow sitting on the ground. Or in the upper position, where it must be padded to prevent accidental unlocking of the locking mechanism.



PIC. 10: Check point A



PIC. 11: Check point B

If malfunction of snowplow locking mechanism occurs in upper position – check the control cable and cable set screws (10.1) a (11.1) – they may be loosen. Tighten them or put them in the correct position.

5 Maintenance, care, storage

⚠ During the maintenance lift the snowplow using the control lever in upper position.

To ensure long-term satisfaction with our product, it is necessary to do proper maintenance and care. Regular maintenance of this machine will prevent its rapid wear and tear and ensure the proper functioning of all its parts.

Follow all instructions regarding machine maintenance and check intervals.

⚠ Before each use of the machine, check the tightness of the screw and nut connections.

5.1 Snowplow lubrication

⚠ When working with lubricants, observe the basic rules of hygiene and comply with regulations and laws of environmental protection.

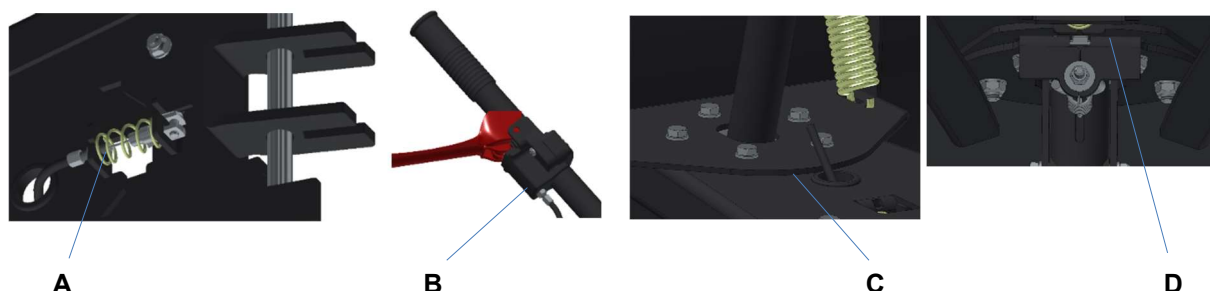
ℹ If you are not sufficiently skilled manually – find professional service.

Before first use, lubricate all moving parts with petroleum jelly or machine oil. We recommend additional lubrication as needed depending on the frequency of use.

To ensure smooth and easy movement of all mechanical parts, sufficient attention must be paid to lubrication. Usually a few drops of oil (e.g., bicycle oil).

5.1.1 Lubrication points

From a wide range of oils, spray oil is the most suitable for lubrication (e.g. WD-40).



PIC. 12: Lubrication point A **PIC. 13:** Lubrication point B **PIC. 14:** Lubrication point C **PIC. 15:** Lubrication point D

At point B, first move the cap towards the red lever using flat screwdriver.

Lubrication point - specification	Season interval	After season	Lubricant	PIC
Control cable	min 2x (5 drops)	Yes	Oil	PIC. 12
Control cable	min 2x (5 drops)	Yes	Oil	PIC. 13
Upper surface of rotation	as necessary	Yes	Oil	PIC. 14
Lower surface of rotation	as necessary	Yes	Oil	PIC. 15


Tab. 3: Lubrication points

5.2 Rubber wear strip change

In case the rubber wear strip is worn or damaged – replace it or turn upside down.

In case of any unprofessional repair without the use of original spare parts, the manufacturer is not liable for damage caused by the snowplow or to the snowplow.

The snowplow is equipped with two height-adjustable skid shoes that prevent wear of the snowplow rubber wear strip. Rubber wear strip can be turned upside down and use second edge if the first edge is worn. Spare rubber wear strip can be ordered as well as other spare parts at any time.

 **The tractor must stand on a solid surface and must be secured in STOP position to allow good access to the blade.**

 **The snowplow must be secured in the lifted position and supported to prevent accidental disengagement of the securing mechanism.**

Procedure:

1. Use wrench size 13 mm, loosen the rubber wear strip screws and nuts.
2. Remove screw, washers, nuts, and reinforcement steel bar.
3. Replace or turn upside down the rubber wear strip.
4. Reinsert the locking bar, screws, washers, and tighten the nuts in the correct order.

5.3 Service intervals

Operation	Before work	During season	Before storage
Washing	-	2x	Yes
Cleaning	-	After	Yes
Rubber wear strip check	Yes	Exchange immediate if damaged	Yes
Bolted joints check	Yes	Every 5 hours	Yes
Lubrication	Yes	Tab. 3	Tab. 3

Tab. 4: Service intervals

5.4 Troubleshooting and solutions

Troubleshooting	Cause	Solution
Snowplow remains in upper position.	Red control lever was not pressed properly.	Press the lever to the end limit.
	Mechanism doesn't work properly.	Check, clean and remove dirt.
	Mechanism doesn't work properly.	Ref. To chapter 4.5.4.1.
	Other troubleshooting.	Contact seller.
The angle setting mechanism does not work.	Control lever was not pressed properly.	Press lever to the end position and set plow angle.
	Mechanism doesn't work properly.	Check, clean and remove dirt.
	Other troubleshooting.	Contact seller.

Tab. 5: Troubleshooting and solutions

5.5 Storage

Before after season storage (e.g., after the season), clean the snowplow of all dirt. Prevent unauthorized persons from accessing the snowplow. Protect the machine from the elements, but do not use airtight cover due to the possibility of increased corrosion underneath.

i Check the condition of the rubber wear strip (if damaged, arrange replacement immediately)

Recommendations:

1. Remove all dirt from snowplow.
2. Repair surface finish at damaged points.
3. Perform after season lubrication, see *Tab. 3*.

5.5.1 Washing and cleaning



When cleaning and washing the machine, proceed in such a way as to comply with the applicable regulations and laws on the protection of water courses and other water sources from their pollution or contamination by chemical substances.

5.6 Packing material and snowplow disposal after the end of lifetime

After unpacking the snowplow, you are obliged to dispose the packaging in accordance with national laws and regulations of waste management.

When disposing the snowplow at the end of useful lifetime, we recommend the following procedure:

1. Remove all parts from the snowplow that can still be used,
2. Disassemble plastic and non-ferrous metal parts.
3. Dispose the rest of dismantled snowplow and dismantled parts in accordance with national waste management laws and ordinances.

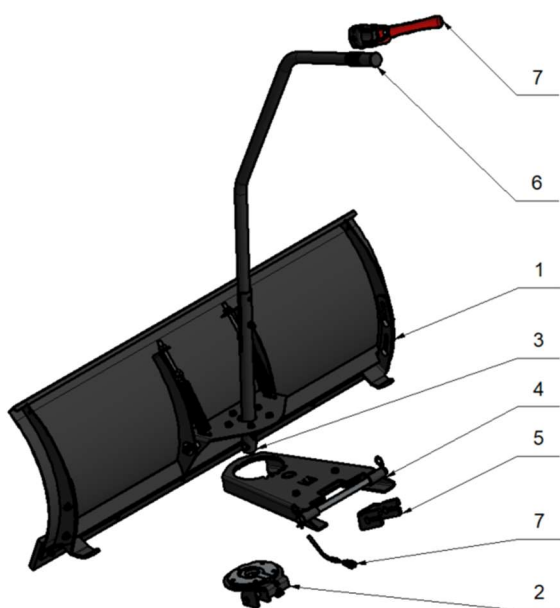
5.7 Production tag

Production tag placed on product.



PIC. 16: Production tag

6 List of spare parts



PIC. 17: Parts scheme

POS.	PART NUMBER	PART NAME	NORM	QTY
1	SB01-00-000	SNOWBLADE 01 (width 120 cm)		1
	SB02-00-000	SNOWBLADE 02 (width 100 cm)		1
	SB03-00-000	SNOWBLADE 03 (width 130 cm)		1
	SB04-00-000	SNOWBLADE 04 (width 140 cm)		1
	SB05-00-000	SNOWBLADE 05 (width 150 cm)		1
2	RP01-00-000	ROTATION POINT 01		1
3	RL01-00-000	LEVER HOUSING 01		1
4	CF01-00-000	CONNECTION FRAME 01		1
5	BM01-00-000	BEAM 01		1
6	LR01-00-000	LEVER 01		1
7	1DT19203	1DT19203	C = 17, L = 1600	1

Tab. 6: Parts list



PIC. 18: Parts scheme 1

SNOWBLADE WIDTH 100 CM				
POS.	PART NUMBER	PART NAME	NORM	QTY
1	SB02-10-000	FRONT ASSEMBLY		1
2	SB01-00-002	SLIDING LEG LEFT	CNC CUT	1
3	SB01-00-003	SLIDING LEG RIGHT	CNC CUT	1
4	SB02-00-001	BLADE ATTACHMENT	CNC CUT	1
5	SB02-00-002	RUBBER BLADE	RUBBER 1000x100x15	1
6	PRDIN603080	COACH BOLT M8x25	DIN 603	4
7	71085	COACH BOLT – M8 x 35	DIN 603	5
8	PRDIN125520	WASHER A8,4	DIN 125	9
9	PRDIN127420	SPRING WASHER A8	DIN 127	4
10	PRDIN934230	NUT M8	DIN 934	9

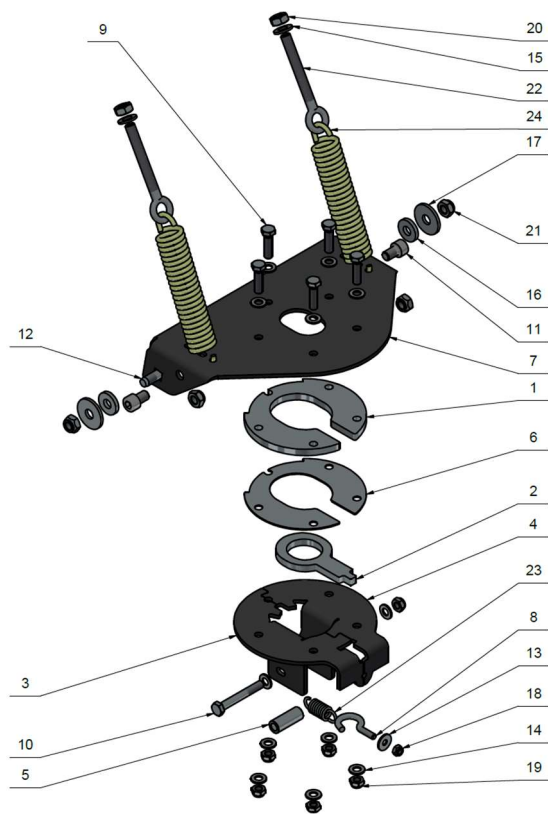
SNOWBLADE WIDTH 120 CM				
POS.	PART NUMBER	PART NAME	NORM	QTY
1	SB01-10-000	FRONT ASSEMBLY		1
2	SB01-00-002	SLIDING LEG LEFT	CNC CUT	1
3	SB01-00-003	SLIDING LEG RIGHT	CNC CUT	1
4	SB01-00-004	BLADE ATTACHMENT	CNC CUT	1
5	SB01-00-005	RUBBER BLADE	RUBBER 1200x100x15	1
6	PRDIN603080	COACH BOLT M8x25	DIN 603	4
7	71085	COACH BOLT – M8 x 35	DIN 603	6
8	PRDIN125520	WASHER A8,4	DIN 125	10
9	PRDIN127420	SPRING WASHER A8	DIN 127	4
10	PRDIN934230	NUT M8	DIN 934	10

SNOWBLADE WIDTH 130 CM				
POS.	PART NUMBER	PART NAME	NORM	QTY
1	SB03-10-000	FRONT ASSEMBLY		1
2	SB01-00-002	SLIDING LEG LEFT	CNC CUT	1
3	SB01-00-003	SLIDING LEG RIGHT	CNC CUT	1
4	SB03-00-001	BLADE ATTACHMENT	CNC CUT	1
5	SB03-00-002	RUBBER BLADE	RUBBER 1300x100x15	1
6	PRDIN603080	COACH BOLT M8x25	DIN 603	4
7	71085	COACH BOLT – M8 x 35	DIN 603	6
8	PRDIN125520	WASHER A8,4	DIN 125	10
9	PRDIN127420	SPRING WASHER A8	DIN 127	4
10	PRDIN934230	NUT M8	DIN 934	10

SNOWBLADE WIDTH 140 CM				
POS.	PART NUMBER	PART NAME	NORM	QTY
1	SB04-10-000	FRONT ASSEMBLY		1
2	SB01-00-002	SLIDING LEG LEFT	CNC CUT	1
3	SB01-00-003	SLIDING LEG RIGHT	CNC CUT	1
4	SB04-00-001	BLADE ATTACHMENT	CNC CUT	1
5	SB04-00-002	RUBBER BLADE	RUBBER 1400x100x15	1
6	PRDIN603080	COACH BOLT M8x25	DIN 603	4
7	71085	COACH BOLT – M8 x 35	DIN 603	7
8	PRDIN125520	WASHER A8,4	DIN 125	11
9	PRDIN127420	SPRING WASHER A8	DIN 127	4
10	PRDIN934230	NUT M8	DIN 934	11

SNOWBLADE WIDTH 150 CM				
POS.	PART NUMBER	PART NAME	NORM	QTY
1	SB05-10-000	FRONT ASSEMBLY		1
2	SB01-00-002	SLIDING LEG LEFT	CNC CUT	1
3	SB01-00-003	SLIDING LEG RIGHT	CNC CUT	1
4	SB05-00-001	BLADE ATTACHMENT	CNC CUT	1
5	SB05-00-002	RUBBER BLADE	RUBBER 1500x100x15	1
6	PRDIN603080	COACH BOLT M8x25	DIN 603	4
7	71085	COACH BOLT – M8 x 35	DIN 603	8
8	PRDIN125520	WASHER A8,4	DIN 125	12
9	PRDIN127420	SPRING WASHER A8	DIN 127	4
10	PRDIN934230	NUT M8	DIN 934	12

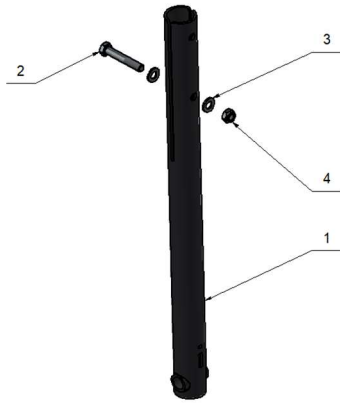
Tab. 7: Parts list 1



PIC. 19: Parts scheme 2

POZICE	SKLADOVÉ ČÍSLO	NÁZEV	NORMA	KS
1	RP01-00-001	MIDDLE PLATE	CNC CUT	1
2	RP01-00-002	LOCKING KEY	CNC CUT	1
3	RP01-00-003	LEVER CONSOLE LEFT	CNC CUT	1
4	RP01-00-004	LEVER CONSOLE RIGHT	CNC CUT	1
5	RP01-00-005	BOUNDARY TUBE	Ø14 - 35,7	1
6	RP01-00-006	SPACER RING	CNC CUT	1
7	RP01-00-007	ROTATION FRAME	CNC CUT	1
8	73345	THREADED HOOK 6x50		1
9	PRDIN933143	SCREW M8x30	DIN 933	5
10	PRDIN931136	SCREW M8x60	DIN 931	1
11	71109	SCREW M10x16	DIN 912	2
12	04001326	COACH BOLT - M10x30 8.8	DIN 603	2
13	04000235	OVERSIZED WASHER 6,4	DIN 9021	1
14	PRDIN125520	WASHER A8,4	DIN 125	12
15	PRDIN125535	WASHER A10,5	DIN 125	2
16	73601	OVERSIZED WASHER	DIN 7349 - 10,5	2
17	73107	WASHER 11	DIN 440R	2
18	PRDIN985221	LOCKNUT M6	DIN 985	1
19	PRDIN985231	LOCKNUT M8	DIN 985	6
20	PRDIN934240	NUT M10	DIN 934	2
21	PRDIN985241	LOCKNUT M10	DIN 985	4
22	71111	FORGED EYEBOLT M10x73		2
23	80422	EXTENSION SPRING 15x2,5x41,5		1
24	80402	EXTENSION SPRING	5x30x120x23	2

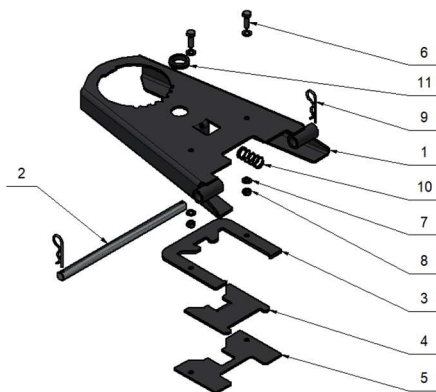
Tab. 8: Parts list 2



PIC. 20: Parts scheme 3

POS.	PART NUMBER	PART NAME	NORM	QTY
1	RL01-10-000	LEVER HOUSING		1
2	PRDIN931134	SCREW M8x50	DIN 931	1
3	PRDIN125520	WASHER A8,4	DIN 125	2
4	PRDIN985231	LOCKNUT M8	DIN 985	1

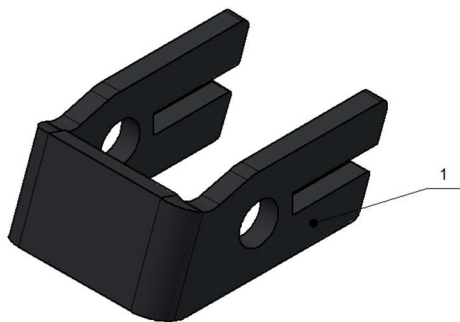
Tab. 9: Parts list 3



PIC. 21: Parts scheme 4

POS.	PART NUMBER	PART NAME	NORM	QTY
1	CF01-10-000	A-PART		1
2	CF01-00-001	CONNECTION FRAME PIN	Ø16 - 300	1
3	CF01-00-002	GUIDE PLATE	CNC CUT	1
4	CF01-00-003	STOP PLATE	CNC CUT	1
5	CF01-00-004	STOP PLATE COVER	CNC CUT	1
6	PRDIN933132	SCREW M8x25	DIN 933	2
7	PRDIN125520	WASHER A8,4	DIN 125	4
8	PRDIN985231	LOCKNUT M8	DIN 985	2
9	PRGA000223	SPLIT PIN 3E		2
10	04001834	COMPRESSION SPRING	2x21x45x6	1
11	KD4	GASKET 25 KD		1

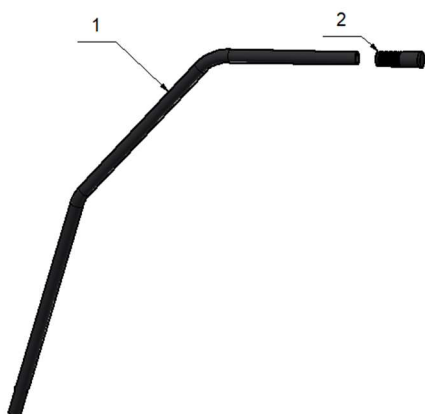
Tab. 10: Parts list 4



PIC. 22: Parts scheme 5

POS.	PART NUMBER	PART NAME	NORM	QTY
1	BM01-00-001	ADAPTER STOP PLATE	CNC CUT	1

Tab. 11: Parts list 5



PIC. 23: Parts scheme 6

POS.	PART NUMBER	PART NAME	NORM	QTY
1	LR01-00-001	LEVER	TUBE Ø28x2,6 - 1395	1
2	76050	HANDLE		1

Tab. 12: Parts list 6

ES PROHLÁŠENÍ O SHODĚ (originál)

EC declaration of conformity (the original)

Výrobce / Manufacturer:	RYKOV Libčany, s.r.o.
Adresa / Address:	Libčany 14, 50322 Libčany, ČR
IČ / ID:	27502805
Jméno a adresa osoby pověřené sestavením technické dokumentace (podle 2006/42/ES, NV č. 176/2008 Sb.) / Name and address of the person authorised to compile the technical file (according to 2006/42/EC):	RYKOV Libčany, s.r.o., Libčany 14, 50322 Libčany, ČR
Výrobek (stroj) – typ / Product (Machine) – Type:	Shrnovací radlice typ SR
Výrobní číslo / Serial number:	001/SB-120-01-01
Popis / Description:	Shrnovací radlice je určena ke shrnování sněhu, nebo sypkých hmot na zpevněném povrchu Šířka záběru: 1200 – 1500 mm. Rozměry: (1200x550x300) mm. Hmotnost: 32 kg.
Prohlašujeme, že strojní zařízení splňuje všechna příslušná ustanovení uvedených směrnic (NV) / We declare that the machinery fulfils all the relevant provisions of the mentioned Directives (Government Provisions):	Strojní zařízení – směrnice 2006/42/ES, NV č. 176/2008 Sb. / the Machinery Directive 2006/42/EC,
Harmonizované technické normy a technické normy použité k posouzení shody / The harmonized technical standards and the technical standards applied to the conformity assessment:	ČSN EN ISO 12100-2:2004, ČSN EN 953+A1:2009, ČSN EN 55014-2:1997 ČSN EN ISO 3746:2010

Poznámka: Veškeré předpisy byly použity ve znění jejich změn a doplňků platných v době vydání tohoto prohlášení bez jejich citování. /
Note: All regulations were applied in wording of later amendments and modifications valid at the time of this declaration issue without any citation of them.


Místo a datum vydání / Libčany 1.8.2022
Place and date of issue:

Osoba zmocněná k podpisu za výrobce /
Signed by the person entitled to deal in the name of producer:

Jméno / Jan Rychtera
Name:

Funkce / jednatel
Grade:

Podpis /
Signature:


RYKOV RYKOV Libčany, s.r.o.
503 22 Libčany 14
tel./fax: 00420 495 585 477, tel.: 00420 495 585 422
IČO: 27502805, DIČ: CZ27502805
www.rykov.cz, e-mail: rykov@rykov.cz